

summum
LOOKBOOK

Winter & Early Spring





cover: top 2s2687-11539C9, **trousers** 4s2234-11539C9
inside cover: blouse 2s2663-11573C9, **trousers** 4s2230-11546C9

WINTER & EARLY SPRING *Collection*

As there is one thing we have learned from last year, every day needs a silver lining. So we are not hiding those sparkles until a party, but incorporate them in our daily wear. From silver coated trousers to sequin embellishments on sweaters, a little shimmer goes a long way. Styles are timeless and sleek like the famous Summum suit. The whole look is festive yet sophisticated with statement laces, silky viscose satins, metallic lames and woven in lurex.

Early spring awakens with a refreshing colour scheme of browns like alpaca and caramel and a spunky matcha green next to the ivory and black as seen in the last collection. Trousers range from skinny - with small foil print - to baggy and pleated in a stretchy tencel for a modern casual feeling. Sweaters are boxy and short in a brushed yarn or oversized like the knitted hoodies for extra comfort.

As for our Blue Daze collection, this season shows an exquisite balance between feminine and tough silhouettes while we keep the authentic denim character intact. The look and feel may be vintage but thanks to our invisible stretch all items are a joy to wear.

The buying period takes place from the 6th of April
up to and including the 3rd of May.

Capsule 9 = delivery in October
Capsule 10 = delivery in November

Capsule 9



blazer 1s1050-11538C9, **trousers** 4s2231-11538C9



blouse 2s2684-11547C9, **trousers** 4s2231-11538C9

blouse 2s2688-11545C9
skirt 6s1215-11545C9





pullover 7s5622-7850C9



dress 5s1328-11538C9, *belt* 8s777-8404AC



dress 5s1323-11544C9



dress 5s1323-11544C9



top 2s2625-11474C9
skirt 6s1214-11474C9



pullover 7s5635-7851C9, slim fit jeans 4s2207-5104BD



dress 5s1329-11573C9



dress 5s1317-11570C9



top 2s2687-11539C9, *trousers* 4s2234-11539C9



pullover 7s5621-7851C10



blazer 1s1051-11549C10
trousers 4s2236-11549C10



blouse 2s2675-11554C10, faux leather culotte 4s2213-11568C10



blouse 2s2675-11554C10



blouse 2s2662-11567C10, *trousers* 4s2225-11575C10, *belt* 8s777-8404AC



blouse 2s2673-11550C10, *flared fit jeans* 4s2208-5086BD



blazer 1s1052-11552C10
trousers 4s2235-11552C10



dress 5s1319-11565C10



classic suit: blazer 1s100-90100C10, trousers 4s100-90100C10



classic suit: blazer 1s100-90100C10, trousers 4s100-90100C10

CAPSULE 9

Every day has a silver lining

Celebrate life in a fancy yet sophisticated look. You don't have to hide those sparkles until a party, but incorporate them in your daily wear.



blouse 2s2688-11545C9, skirt 6s1215-11545C9



dress 5s1329-11573C9

- blouse*
2s2682-11544C9
- slim fit jeans*
4s2207-5104BD

- denim blouse*
2s2669-5106BD
- t-shirt*
3s4617-30300C10
- faux leather trousers*
4s120-90400C9



- dress* 5s1329-11573C9
- blouse* 2s2682-11544C9
- slim fit jeans* 4s2207-5104BD
- belt* 8s777-8404AC



Left:
pullover
7s5623-7855C9
trousers
4s2229-11538C9

right:
pullover
7s5619-7849C9
trousers
4s2231-11538C9



pullover 7s5622-7850C9

dress 5s1327-30296C9



pullover 7s5619-7849C9, **trousers** 4s2231-11538C9



blazer 1s1050-11538C9, **t-shirt** 3s4617-30300C10, **trousers** 4s2234-11539C9



blazer 1s1050-11538C9
t-shirt 3s4617-30300C10
trousers 4s2234-11539C9



top 2s2687-11539C9
trousers 4s2234-11539C9

dress 5s1328-11538C9



pullover 7s5635-7851C9
trousers 4s2230-11546C9



jacket 1s1048-11571C10
t-shirt 3s4606-30295C9
trousers 4s2230-11546C9

sweater 3s4616-30298C9
slim fit jeans 4s2207-5104BD
belt 8s777-8404AC



jacket 1s1048-11571C10, *trousers* 4s2230-11546C9



dress 5s1323-11544C9



top 2s2679-11547C9
slim fit jeans 4s2207-5104BD



blouse 2s2682-11544C9
slim fit jeans 4s2207-5104BD
belt 8s777-8404AC

dress 5s1324-11548C9





pullover
7s5623-7855C9
trousers
4s2229-11538C9

blouse
2s2688-11545C9
skirt
6s1215-11545C9



pullover 7s5617-7850C9
skirt 6s1215-11545C9

blazer 1s1050-11538C9
knitted top 7s5634-7854C9
trousers 4s2231-11538C9

pullover 7s5617-7850C9
skirt 6s1215-11545C9





cardigan 7s5628-7857C9, *blouse* 2s2663-11573C9, *flared fit jeans* 4s2208-5086BD



blouse 2s2663-11573C9
flared fit jeans 4s2208-5086BD



dress 5s1328-11538C9

dress 5s1328-11538C9



top 2s2625-11474C9
skirt 6s1214-11474C9



sweater 3s4616-30298C9
slim fit jeans 4s2207-5104BD
belt 8s777-8404AC

dress 5s1316-11475C9
faux leather legging 4s120-90400C9



dress 5s1317-11570C9

CAPSULE 10

Spring awakening

Slowly getting ready for sunnier days with a refreshing new colour scheme. The warm shades of brown and a spunky matcha are leading the way to Spring.



blouse 2s2665-11565C10, faux leather culotte 4s2213-11568C10



dress 5s1319-11565C10, *faux leather blouse* 2s2668-11568C10, *belt* 8s777-8404AC

faux leather blouse
2s2668-11568C10
dress
5s1319-11565C10
belt
8s777-8404AC
top
3s4599-30296C10
trousers
4s2221-30296C10



long blazer 1s1060-11549C10
faux leather culotte 4s2213-11568C10
blouse 2s2665-11565C10
faux leather culotte 4s2213-11568C10

blazer 1s1051-11549C10
trousers 4s2236-11549C10



blouse 2s2680-11551C10
trousers 4s2228-11549C10

blouse 2s2685-11551C10
trousers 4s2235-11552C10
belt 8s779-8406AC



blazer 1s1051-11549C10, **t-shirt** 3s4617-30300C10, **trousers** 4s2236-11549C10



blazer 1s1052-11552C10, **t-shirt** 3s4605-30295C10, **trousers** 4s2235-11552C10, **belt** 8s779-8406AC

blazer
1s1052-11552C10
trousers
4s2235-11552C10
blouse
2s2662-11567C10
trousers
4s2235-11552C10
belt
8s779-8406AC



blouse 2s2662-11567C10
trousers 4s2235-11552C10
belt 8s779-8406AC

blazer 1s1052-11552C10
t-shirt 3s4605-30295C10
trousers 4s2235-11552C10
belt 8s779-8406AC

top 3s4602-30306C10
trousers 4s2236-11549C10



top 3s4602-30306C10
blazer 1s1051-11549C10
top 3s4602-30306C10
trousers 4s2236-11549C10



AWARE LABEL



The below fabrics are part of this seasons AWARE label:

CMT:

214 / 11543: 100% viscose

This viscose fabric is made up of 50% FSC-label yarns. These are the weft yarns made from wood pulp from trees grown in sustainably managed forests.

JERSEY:

214-215 / 30293 + 90310:

95% EcoVero viscose, 5% elastane

The viscose in this fabric is EcoVero™ viscose from Lenzing, a yarn made from wood pulp sourced from sustainable, FSC or PEFC-certified forests. The closed loop production process used to make this yarn recycles both water and solvents. Please visit www.ecovero.com for more information.

214-215 / 30295: 50% cotton, 50% EcoVero modal

This fabric is a blend of cotton and modal. Just like viscose, modal is made from cellulose fibres from beech trees. EcoVero™ modal by Lenzing has a positive CO2 footprint. Lenzing's closed loop production process keeps both emissions and water consumption to a minimum. In comparison with cotton, the production process for Lenzing's modal requires considerably less land and 10 to 20 times less water.

214-215 / 30292: 95% organic cotton, 5% elastane

All of the cotton in this fabric comes from organic cotton cultivation. The cotton was grown under strictly controlled conditions, without genetic modification and without the use of toxic pesticides or other harmful chemicals.

215 / 30305: 95% EcoVero viscose, 5% elastane

The viscose in this fabric is EcoVero™ viscose from Lenzing, a yarn made from wood pulp sourced from sustainable, FSC or PEFC-certified forests. The closed loop production process used to make this yarn recycles both water and solvents. Please visit www.ecovero.com for more information.

BLUE DAZE:

4s2233-5109: 70% cotton/14% recycled polyester/ 12% reused cotton/4% elastane

The polyester fibres in this material are made from recycled polyester from recycled plastic such as PET bottles, making it a greener and more sustainable alternative to virgin polyester yarns. As well as shrinking the world's plastic waste mountain, the production process requires less water, less use of chemicals and less energy.

12% of the cotton in this material is reused. These cotton fibres are recovered from leftover and used cotton textiles and are mixed with virgin cotton fibres to form new yarns and fabrics.

KNIT:

7s5619-7849: 35% viscose, 35% polyamide, 30% wool

This blended fabric is made from 30% mulesing-free merino wool - to produce this wool - to produce this wool, the merino sheep are reared and farmed in an animal-friendly way to ensure sustainable wool production. This blend is also made up of 35% FSC-label viscose. The wood pulp from which the viscose is made comes from trees from sustainably managed forests.

ACCESSORIES:

8s777-8404 / 8s778-8405 / 8s779-8406: 100% cow leather

Summum's belts are made in the Netherlands using leather that complies with the European REACH regulation for the use of chemicals. The leather used is residual waste from the European food industry and is processed and coloured by a Dutch tannery.

The buckles and other metal parts are nickel free.



long blazer 1s1060-11549C10, *blouse* 2s2686-11554C10, *trousers* 4s2225-11575C10



blouse 2s2675-11554C10
trousers 4s2218-11336C10
belt 8s779-8406AC



pullover 7s5620-7852C10
loose tapered jeans 4s2233-5109BD
belt 8s777-8404AC
bag 8s776-8403AC

pullover 7s5621-7851C10



blouse 2s2674-11550C10



classic suit:
blazer 1s100-90100C10
trousers 4s100-90100C10

blouse 2s2674-11550C10
slim fit jeans 4s2222-5107BD
belt 8s779-8406AC



pullover 7s5632-7858C10, *trousers* 4s2225-11575C10, *scarf* 8s774-8400AC



spencer 7s5624-7855C10, *blouse* 2s2678-11567C10, *trousers* 4s2225-11575C10, *bag* 8s776-8403AC



spencer 7s5624-7855C10
blouse 2s2678-11567C10



blouse 2s2681-11572C10
trousers 4s2215-11562C10
belt 8s777-8404AC

pullover 7s5629-7860C10
trousers 4s2216-11322C10
belt 8s777-8404AC



Hey, wait...

THERE IS MORE Online

Have we caught your interest with our new Winter/Early Spring lookbook? Then we've got good news for you! You can discover more collection online on our B2B website.

We look forward to welcoming you at one of our showrooms. If you would prefer not to come in person, we would love to show you our gorgeous new collection online. You can take a look in our online showroom and pre-order the Winter/Early Spring collections - all with the help of your agent or a member of our sales team. You can find the showroom in the standard B2B customer portal. The magic key is your customer-specific login. <https://b2b.summumwoman.com>



blouse 2s2672-11542C9, straight fit jeans 4s2210-5094BD



top 2s2687-11539C9
trousers 4s2234-11539C9



blouse 2s2663-11573C9
trousers 4s2230-11546C9



blazer 1s1050-11538C9
trousers 4s2231-11538C9



blouse 2s2684-11547C9
trousers 4s2231-11538C9



blouse 2s2688-11545C9
skirt 6s1215-11545C9



blouse 2s2688-11545C9
skirt 6s1215-11545C9



denim blouse 2s2669-5106BD
t-shirt 3s4617-30300C10
faux leather trousers
4s120-90400C9



blouse 2s2682-11544C9
slim fit jeans 4s2207-5104BD
belt 8s777-8404AC



pullover 7s5623-7855C9
trousers 4s2229-11538C9



pullover 7s5622-7850C9



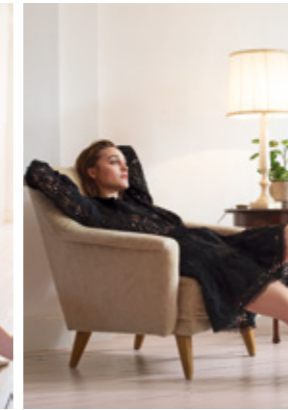
pullover 7s5622-7850C9



dress 5s1328-11538C9
belt 8s777-8404AC



dress 5s1323-11544C9



top 2s2625-11474C9
skirt 6s1214-11474C9



pullover 7s5635-7851C9
slim fit jeans 4s2207-5104BD



dress 5s1327-30296C9



pullover 7s5619-7849C9
trousers 4s2231-11538C9



blazer 1s1050-11538C9
t-shirt 3s4617-30300C10
trousers 4s2234-11539C9



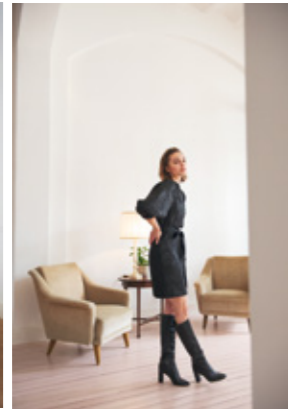
dress 5s1328-11538C9



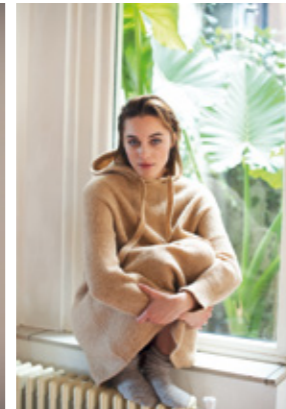
top 2s2687-11539C9
trousers 4s2234-11539C9



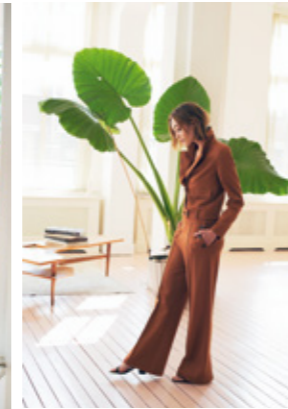
dress 5s1329-11573C9



dress 5s1317-11570C9



pullover 7s5621-7851C10



blazer 1s1051-11549C10
trousers 4s2236-11549C10



blouse 2s2675-11554C10
faux leather culotte
4s2213-11568C10



jacket 1s1048-11571C10
t-shirt 3s4606-30295C9
trousers 4s2230-11546C9



pullover 7s5635-7851C9
trousers 4s2230-11546C9



sweater 3s4616-30298C9
slim fit jeans 4s2207-5104BD
belt 8s777-8404AC



dress 5s1324-11548C9



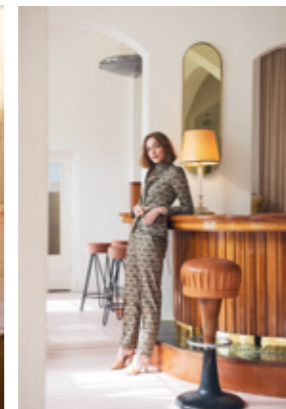
top 2s2679-11547C9
slim fit jeans 4s2207-5104BD



blouse 2s2662-11567C10
trousers 4s2225-11575C10
belt 8s777-8404AC



blouse 2s2673-11550C10
flared fit jeans 4s2208-5086BD



blazer 1s1052-11552C10
trousers 4s2235-11552C10



dress 5s1319-11565C10



classic suit:
blazer 1s100-90100C10
trousers 4s100-90100C10



blouse 2s2682-11544C9
slim fit jeans 4s2207-5104BD
belt 8s777-8404AC



blazer 1s1050-11538C9
knitted top 7s5634-7854C9
trousers 4s2231-11538C9



pullover 7s5617-7850C9
skirt 6s1215-11545C9



cardigan 7s5628-7857C9
blouse 2s2663-11573C9
flared fit jeans 4s2208-5086BD



dress 5s1328-11538C9



dress 5s1316-11475C9
faux leather trousers
4s120-90400C9



dress 5s1317-11570C9



blouse 2s2665-11565C10
faux leather culotte
4s2213-11568C10



dress 5s1319-11565C10
faux leather blouse
2s2668-11568C10
belt 8s777-8404AC



top 3s4599-30296C10
trousers 4s2221-30296C10



blouse 2s2680-11551C10
trousers 4s2228-11549C10



blouse 2s2685-11551C10
trousers 4s2235-11552C10
belt 8s779-8406AC



blazer 1s1051-11549C10
t-shirt 3s4617-30300C10
trousers 4s2236-11549C10



blazer 1s1052-11552C10
t-shirt 3s4605-30295C10
trousers 4s2235-11552C10
belt 8s779-8406AC



blouse 2s2662-11567C10
trousers 4s2235-11552C10
belt 8s779-8406AC



blazer 1s1051-11549C10
top 3s4602-30306C10
trousers 4s2236-11549C10



long blazer 1s1060-11549C10
blouse 2s2686-11554C10
trousers 4s2225-11575C10



pullover 7s5620-7852C10
tapered jeans 4s2233-5109BD
belt 8s777-8404AC
bag 8s776-8403AC



blouse 2s2674-11550C10
slim fit jeans 4s2222-5107BD
belt 8s779-8406AC



pullover 7s5632-7858C10
trousers 4s2225-11575C10
scarf 8s774-8400AC



spencer 7s5624-7855C10
blouse 2s2678-11567C10
trousers 4s2225-11575C10
bag 8s776-8403AC



pullover 7s5629-7860C10
trousers 4s2216-11322C10
belt 8s777-8404AC



blouse 2s2681-11572C10
trousers 4s2215-11562C10
belt 8s777-8404AC



blouse 2s2672-11542C9
straight fit jeans 4s2210-5094BD



blouse 2s2681-11572C10



pullover 7s5618-7850C9
straight fit jeans 4s2210-5094BD

CONTACT US

BELGIUM

Eefje Gilis
+32 (0)475741959

DENMARK

Hanne Schultz
+45 (0)20355718

FINLAND

Taina Myllylä
+35 (0)8405586584

FRANCE

General Agent
Frank Mattouk
+33 (0)688364876

Paris + North

Monique La Croix
+33 (0)613089190

GERMANY

Berlin
Brita Daberkow
+49 (0)3074004581

Hamburg

Ingo Palm
+49 (0)15124021580

Munich

Sabine Pfisterer
+49 (0)1728504491

Nordrhein-Westfalen

Regine Schwarz
+49 (0)21317181485

Eschborn

Claudia Walenta
+49 (0)1717560210

Sindelfingen

Susanne Sanz
+49 (0)1722566365

GREAT BRITAIN

Jo Briggs
+44 (0)7496774792

IRELAND

Michael Griffith
+44 (0)7976804101

NORWAY

Harald Dahlstrøm
+47 (0)97153888

RUSSIA

Valery Schütz
+49 (0)23072699808

SPAIN

Billbao
Rodolfo Echevarria
+34 (0)607898363

San Sebastián

Cristina Hernandez
Juantergui
+34 (0)670497445

SWEDEN

Ebba Hårleman
+46 (0)709261522

SWITZERLAND

Mark Struck
+41 (0)763809940

U.S.A

Tanya Gabrielyan
+1 (415) 5331293

SUMMUM WOMAN HEADQUARTERS

+31 (0)202622800
sales@summumwoman.com
summumwoman.com



blouse 2s2681-11572C10

summumwoman.com